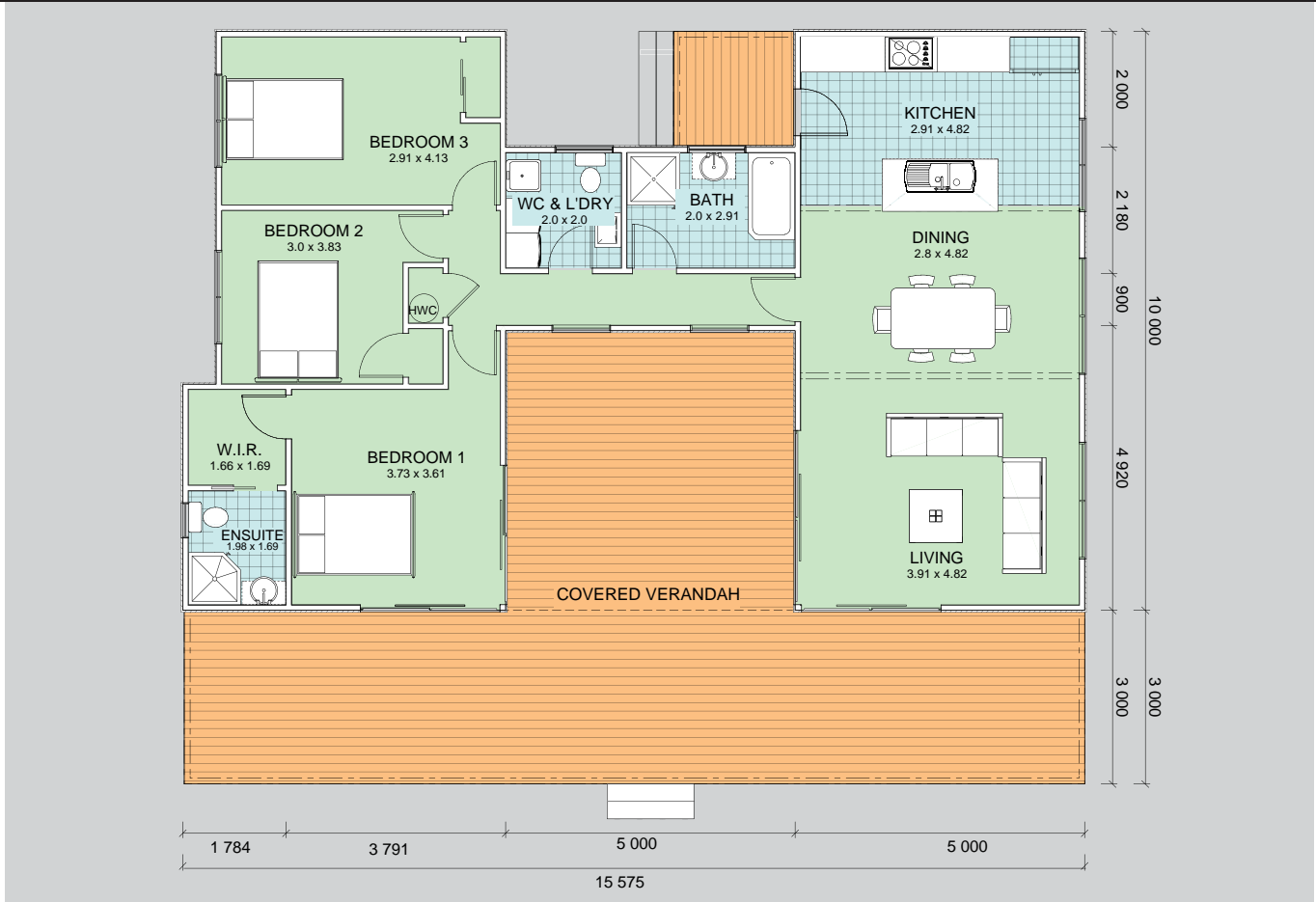


TRENZ HOMES #3118



-  **118sqm**
-  **3**
-  **2**
-  **2**



This ultra modern design of approximately 118m² features 3 bedrooms with 2 bathrooms. A covered verandah offers year round outdoor entertaining. The layout is easily modified to meet your individual needs. 3118g and 3118m built with steel framing only.



All plans and images copyright of Kitset Homes NZ Ltd© 2010

sales@kitsetgo.co.nz 0800 2 KITSET